

Sparklike Laser Portable™ 2.2

Thank you for choosing Sparklike Laser Portable 2.2™ to measure the gas concentrations on your insulating glass products. Sparklike Laser Portable™ is a unique product for non-destructive analysis, that measures even through coatings and laminations.. Sparklike Laser Portable™ measures oxygen and the results can be converted to argon, krypton or other insulating gases.

The equipment consists of three parts: a trolley case with the main unit, measuring head and display with additional parts.

Before operating the equipment, register your device at our website sparklike.com/register. Follow the Setup Guide carefully before using the device.



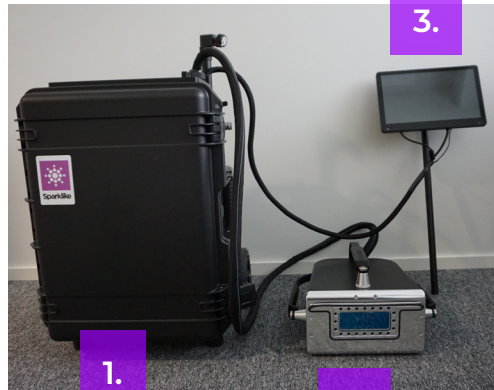
Table of Contents

1. Unpack
2. Initial Setup
3. Overview of the ready-to-use device

1. UNPACK

Standard items in a pallet box

1. The trolley with the main unit
2. Measuring head
3. 12" touch screen display and display holder
4. Transportation box and two packing foams (keep these for future shipments!)

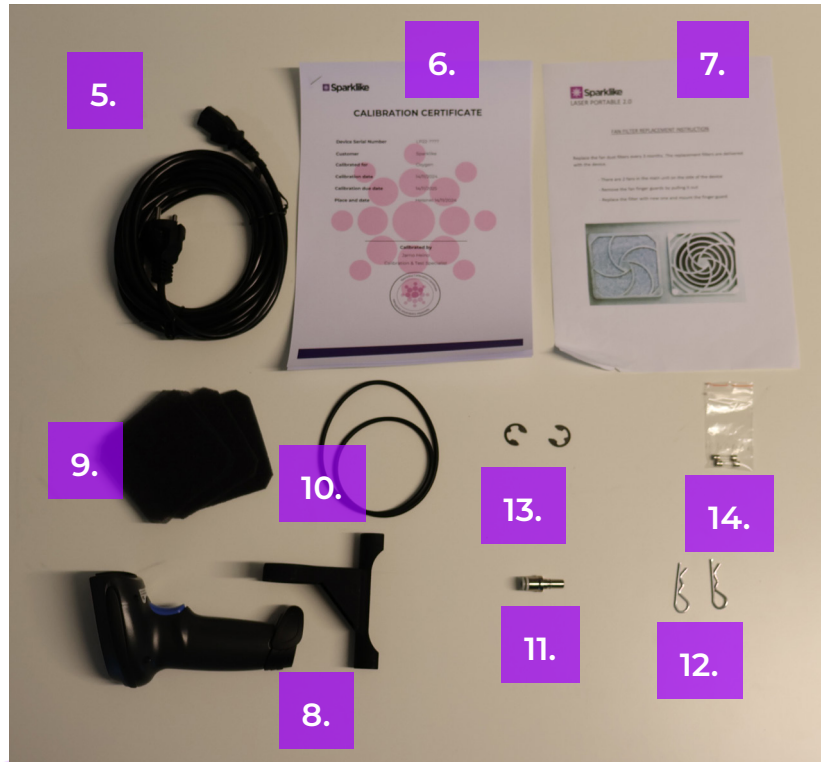


Accessories and spare parts

5. Power cord
6. Calibration certificate
7. Fan filter replacement instructions
8. Sparklike barcode reader and holder

Spare parts box

9. Fan filters x 6
10. Foam ribbon
11. Quick connector for the gas hose
12. Pin clips x 2
13. E-clips x 2
14. Fuses x 2



Optional items

15. Protective cover
16. Measuring head box

Note: Separate gas cylinder, gas hose, regulator and flowmeter are needed to flush the measuring head. **They are not provided by Sparklike.**



2. INITIAL SETUP



1. Place the measuring head to the holder at the top of the device. Remember to lock the measuring head in place with the locking knob.



3. Attach the display stand to the main unit and tighten the screw. Make sure that the quick lock is closed.



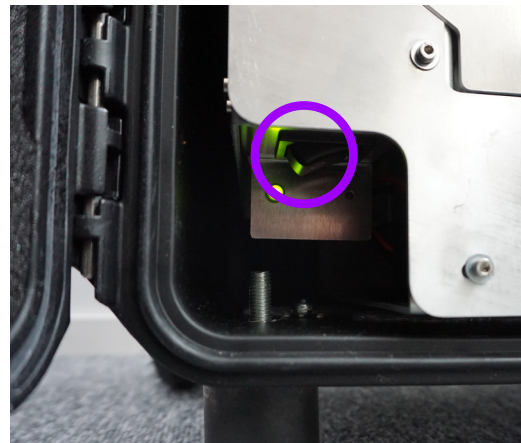
5. Place the barcode holder on the display stand and attach the barcode USB to the main unit.



2. Attach the display to the display stand and tighten the screw.



4. Connect the HDMI, USB and the power cable to the display.



8. Turn ON the main switch **inside** the case. Make sure you can see the green led lights up.



9. Connect the provided power cord to the main unit and the other end to the mains power outlet.

11. Register your device at sparklike.com/register to receive an activation code to your email.

13. To start using the device see the Instruction Manual at sparklike.com/guidance/lp.



10. Turn the device ON from the power switch button on the side of the case.

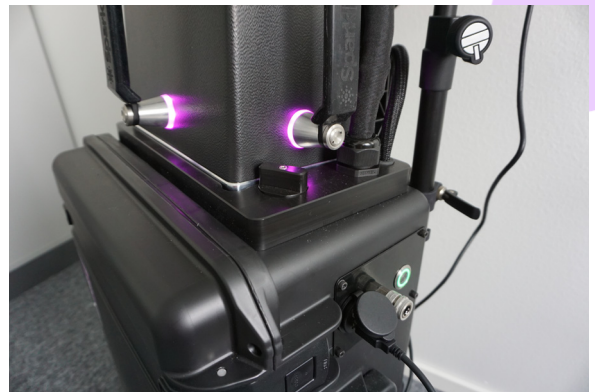
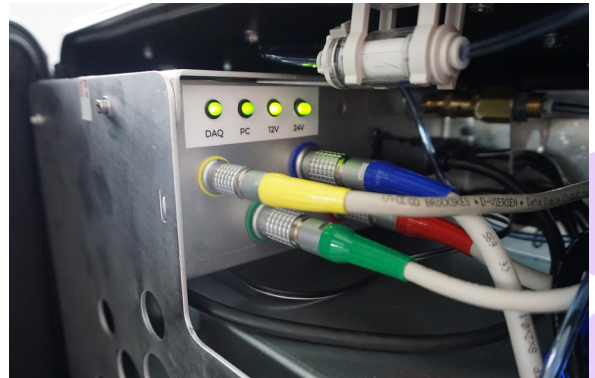
12. On the first start-up, the activation code is entered as a password for the device. Use the On-Screen Keyboard provided by Windows. Go to sparklike.com/guidance/lp for more detailed registration instructions.

3. OVERVIEW OF THE READY-TO-USE DEVICE

Ready to use device:

- » Led light is green inside the main unit, next to the main switch.
- » Software is ON and functioning
- » Led lights are ON in the handles of the measuring head
- » Green light in the power switch button is ON.

Instructions on how to use the device can be found from the device manual



Connection points and switches

1. Power switch
2. Flushing gas inlet
3. Dual USB port with dust cover
4. Start buttons on the measuring head
5. Power cord outlet
6. Main switch (inside the case)

**Scan the QR-code for
further instructions and
support**

sparklike.com/guidance/lp



SPARKLIKE OY

www.sparklike.com

Helsinki, Finland

1/2025



Sparklike