

Sparklike Laser Portable™ 2.1

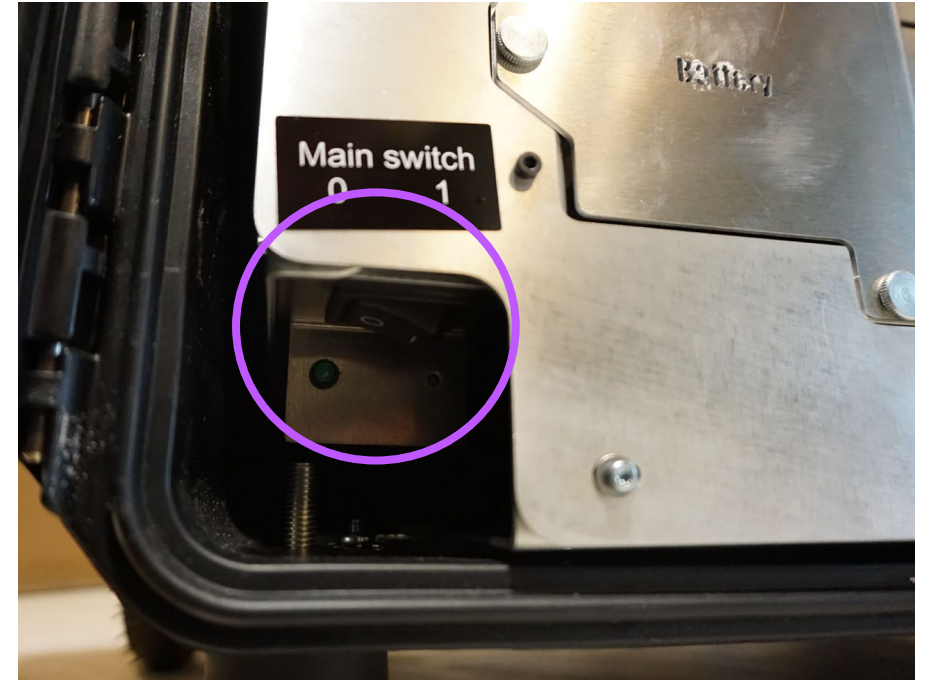
Packing guide for shipping

Keep the pallet, the pallet collars, and the foams for future maintenance shipments!

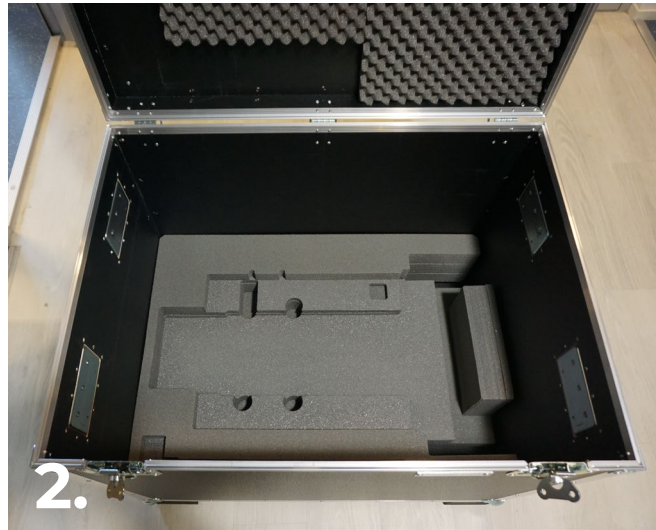


Guide info

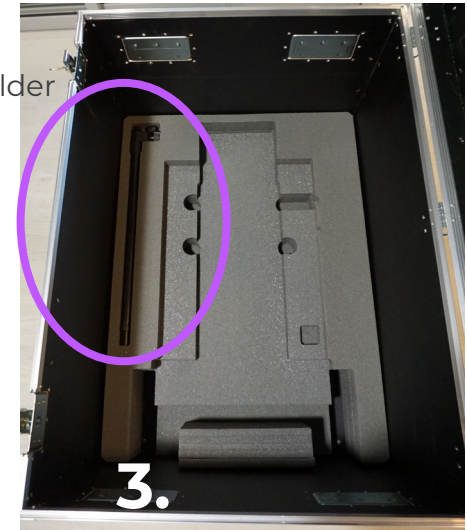
- Sparklike Laser Portable™ 2.1 is a sensitive measuring device so it must be packed appropriately to ensure safe shipping.
- In case our packing instructions have not been followed, Sparklike is not responsible for the damages caused by incorrect packing.
- This guide shows step by step pictures of how to pack Sparklike Laser Portable™ 2.1 for the shipping.
- Remember to keep the packing materials for future maintenance shipments!

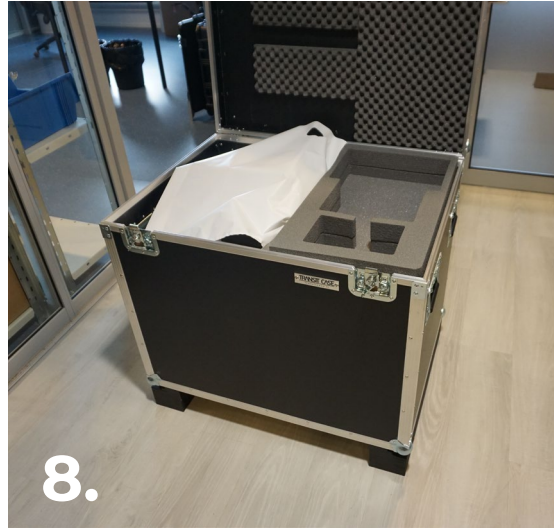


Remember to turn off the battery from the main switch inside the case before shipping the device



Display holder







Shipping address:

Sparklike Oy/Lauri Loukovaara
Osmontie 34,
00610 Helsinki
Finland