

# Sparklike Laser Portable™ 2.0

Device registration instructions

## REGISTER YOUR DEVICE AND CARE

### Register your device to receive an activation code

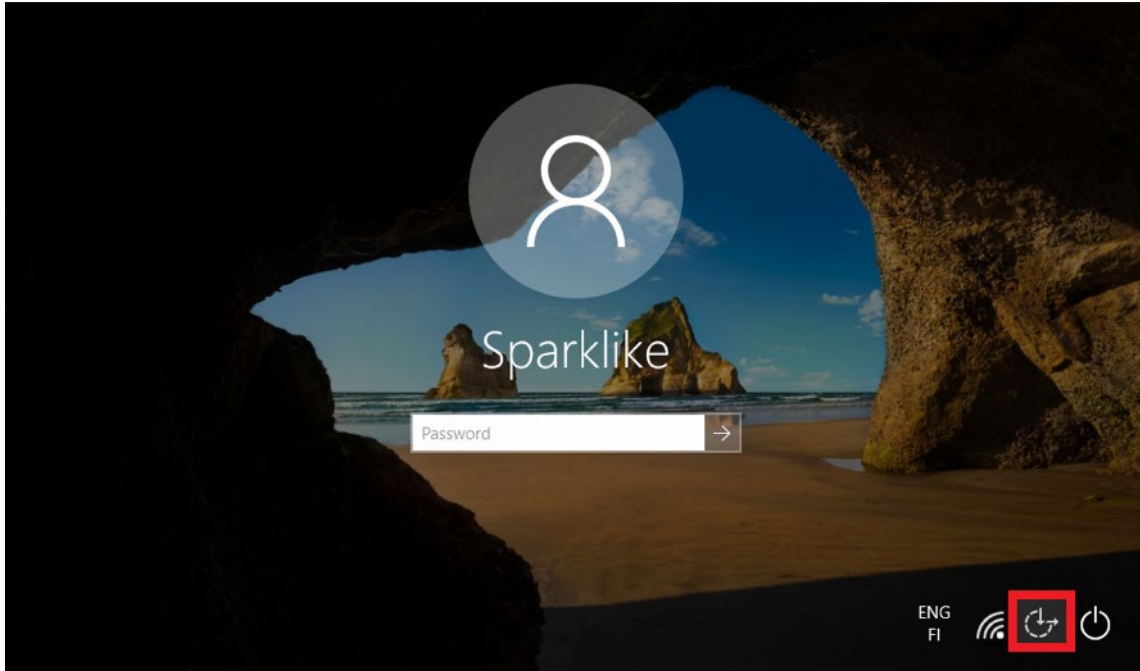
By registering you will receive an activation code to start using your Sparklike device.

Please note that registering is also required for our existing customers to ensure faster and smoother service, since registered devices will take priority in service.

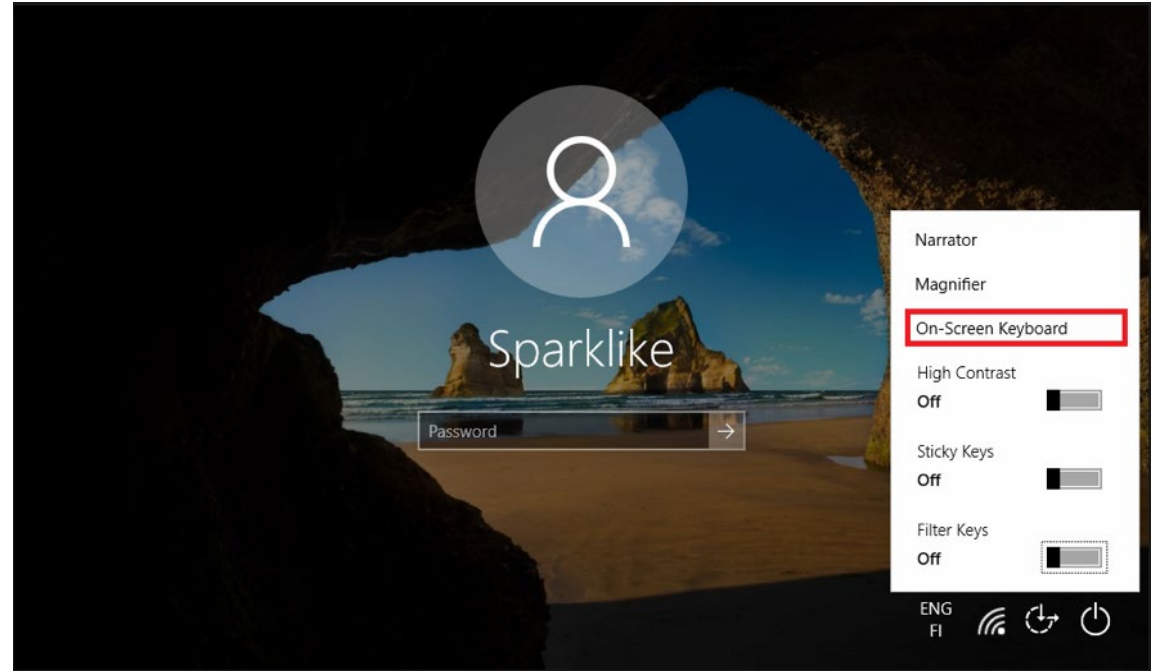
1. Register your device at <https://www.sparklike.com/en/register> to get an activation code to your email.



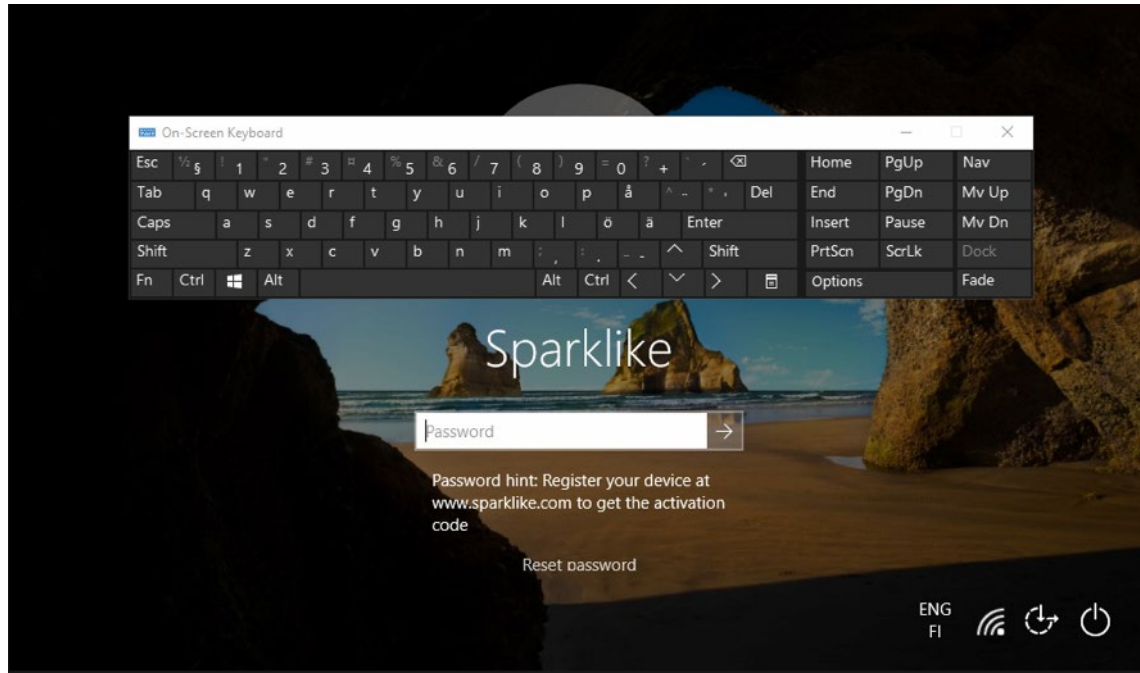
2. Start-up the device. Tab the screen when locking screen appears.



3. Press the **Ease of access icon** marked in the picture below

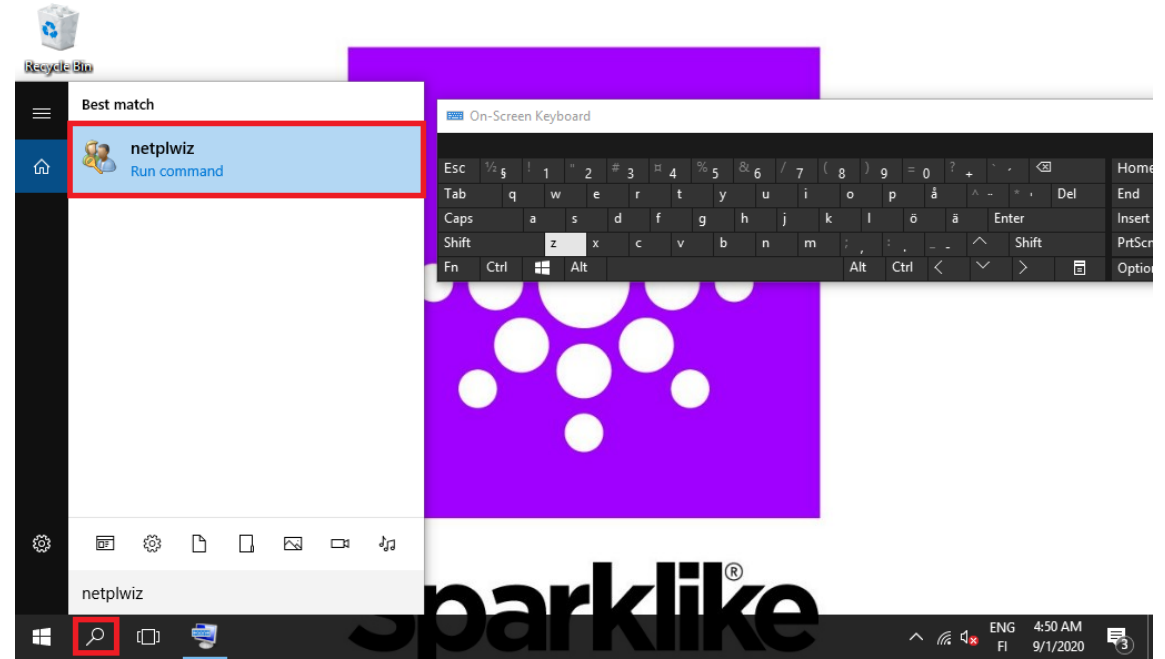


4. Start the **On-Screen Keyboard**

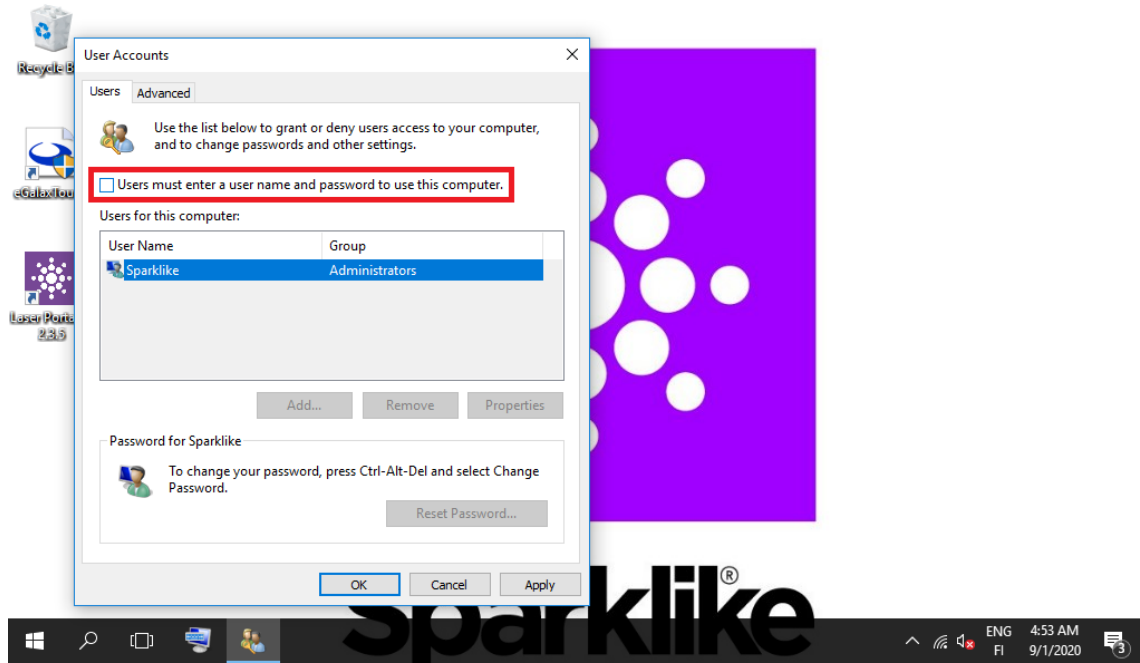


5. Type in the activation code from your email as a password for the device

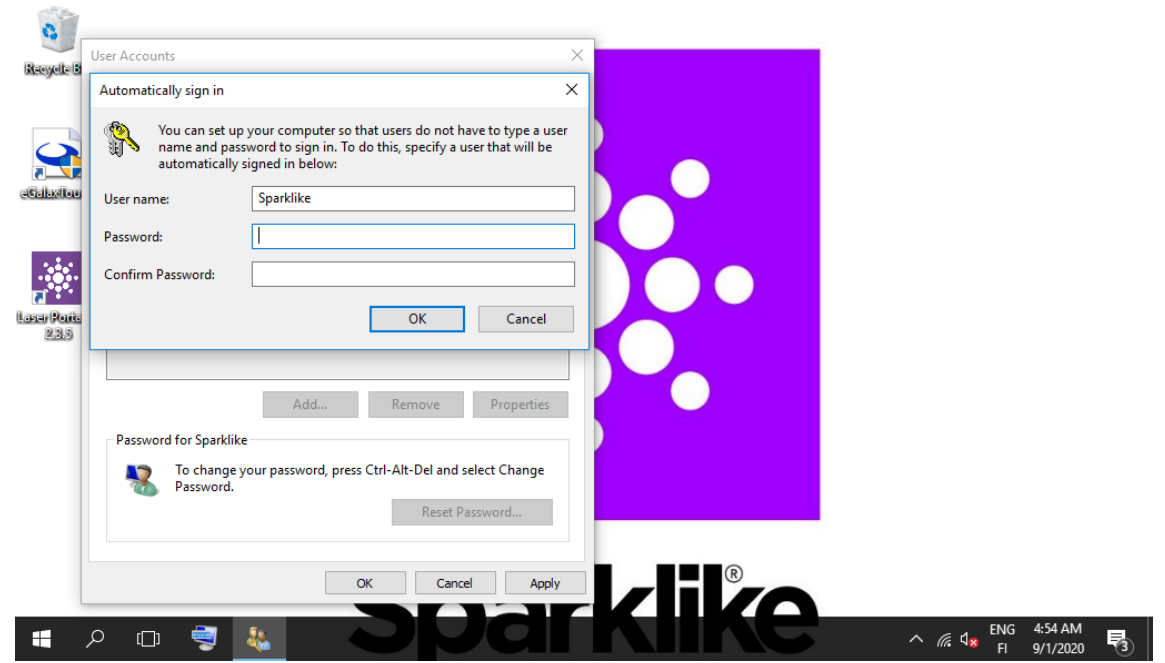
To avoid typing in the password again, follow these instructions further:



6. Press the **Magnifier icon** marked on the picture below. Type in “netplwiz” and run the **netplwiz-program** by clicking the marked icon.



7. Uncheck the “Users must enter a user name and password to use this computer” checkbox and press OK.



8. Type in the activation code to Password and Confirm Password boxes and press OK.

# Your device is ready to go!

If you face any problems with registration, please don't hesitate to contact us:

**[service@sparklike.com](mailto:service@sparklike.com)**